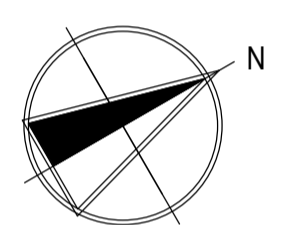
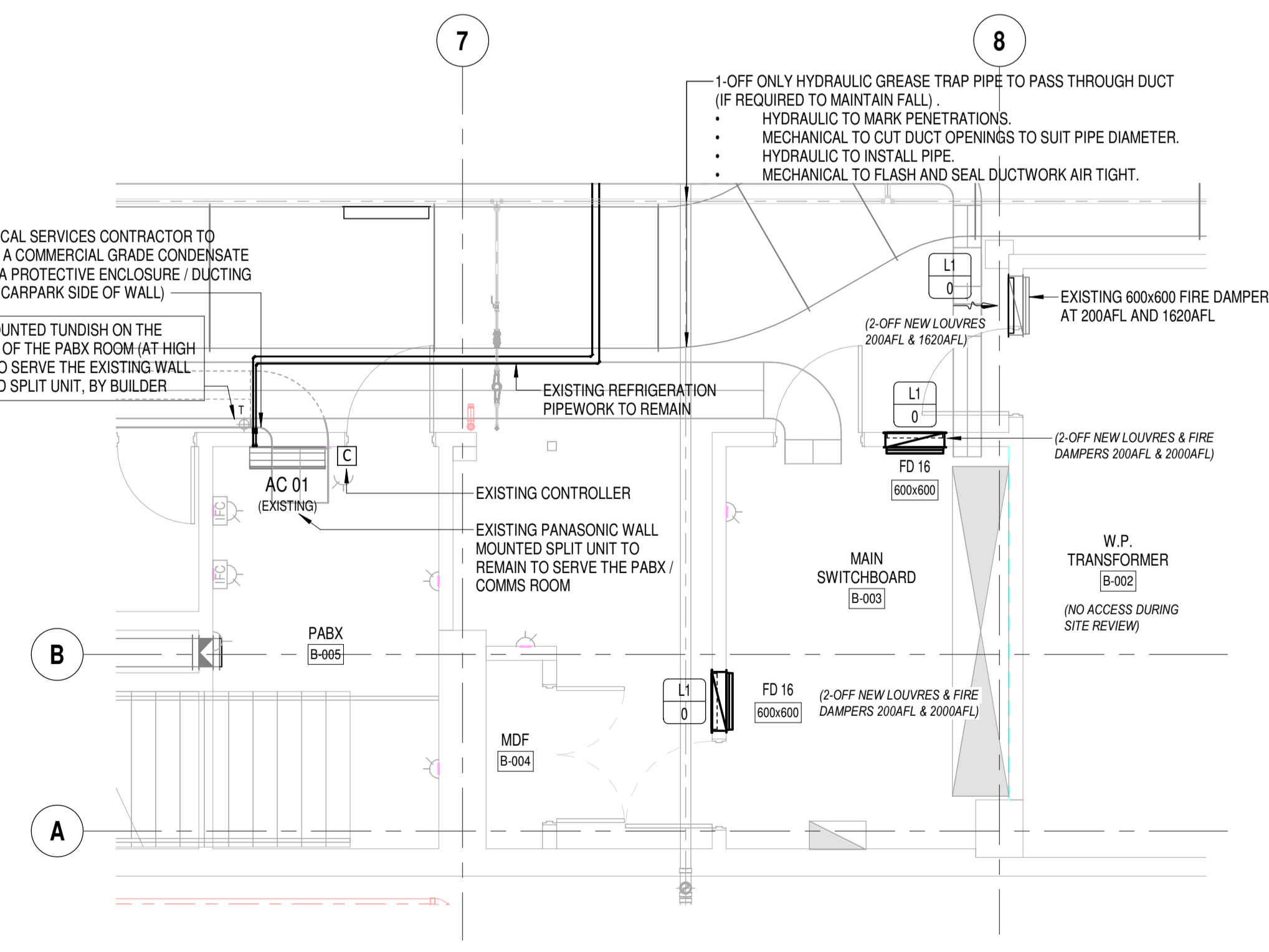


- ### LEGEND & NOTES
- DENOTES UN-INSULATED PGI DUCTWORK
  - DENOTES KITCHEN EXHAUST DUCTWORK
  - DENOTES DUCTWORK INTERNALLY LINED WITH 25mm THICK (R=0.6) PERFORATED SISAL FACED INSULATION.
  - DENOTES DUCTWORK INTERNALLY LINED WITH 40mm THICK (R=1.0) INSULATION.
  - DENOTES DUCTWORK INTERNALLY LINED WITH 50mm THICK (R=1.2) INSULATION.
  - DENOTES DUCTWORK INTERNALLY LINED WITH 75mm THICK (R=2.0) INSULATION.
  - DENOTES UNINSULATED FLEXIBLE DUCT.
  - DENOTES FLEXIBLE DUCT EXTERNALLY INSULATED WITH R=1.0 INSULATION AND SISAL FACED.
  - DENOTES WALL MOUNTED TEMPERATURE SENSOR COMPLETE WITH INTERGRADED AFTER-HOURS PUSH BUTTON AT 1500AFL. VAV BOX THERMOSTATS TO BE PROVIDED WITH 10m OF CABLE, COILED UP AND PLACED ON TOP OF THE VAV BOX FOR INSTALLATION DURING THE TENANCY FITOUT.
  - DENOTES WALL MOUNTED AIR CONDITIONING CONTROLLER
  - DENOTES A DOOR GRILLE. REFER TO THE DIFFUSION SCHEDULE ON DRAWING M01 FOR SIZING.
  - DENOTES A 600x600 CEILING ACCESS PANEL BY BUILDER
  - XX - AIR DIFFUSION TAG (REFER TO SCHEDULE FOR DETAILS)
  - 00000 - AIR QUANTITY (l/s)
  - T - DENOTES A TUNDISH BY BUILDER
  - DS - DENOTES A DRAIN STUB BY BUILDER
- GENERAL:**
- DRAWINGS TO BE READ IN CONJUNCTION WITH THE GEOFF HESFORD ENGINEERING MECHANICAL SERVICES SPECIFICATION.
  - MECHANICAL CONTRACTOR TO SITE SURVEY AND ACCURATELY MEASURE THE EXISTING STRUCTURE PRIOR TO COMPLETING THE DETAILED SHOP DRAWINGS.
  - DETAILED MECHANICAL SERVICES BUILDERS WORKS DRAWINGS INDICATED STRUCTURE PENETRATIONS TO BE SUBMITTED TO ARUP FOR APPROVAL.
  - REFER TO DRAWING M01 FOR THE AIR DIFFUSION SCHEDULE.



**1 BASEMENT**  
SCALE 1 : 100

AIR DIFFUSION SCHEDULE											
Diffusion Tag	Description	Nominal		Neck		Face Diameter mm	Neck Diameter mm	Spigot Diameter mm	Spigot Damper	OBD	SSD
		Width mm	Height mm	Width mm	Height mm						
CD1	CIRCULAR ADJUSTABLE EYE BALL TYPE SUPPLY AIR GRILLE					302					
D1	SWIRL DIFFUSER, COLLAR AND INTERNALLY INSULATED CUSHION HEAD	595	595				500	200	No		
D1a	SWIRL DIFFUSER, 3 WAY BLOW, COLLAR AND INTERNALLY INSULATED CUSHION HEAD	595	595				500	200	No		
D2	SWIRL DIFFUSER, COLLAR AND INTERNALLY INSULATED CUSHION HEAD	595	595				500	250	No		
D2a	SWIRL DIFFUSER, COLLAR, INTERNALLY INSULATED CUSHION HEAD AND DAMPER	595	595				500	250	Yes		
D3	SWIRL DIFFUSER, COLLAR AND INTERNALLY INSULATED CUSHION HEAD	595	595				500	300	No		
D3a	SWIRL DIFFUSER, COLLAR, INTERNALLY INSULATED CUSHION HEAD AND DAMPER	595	595				500	300	Yes		
D5	CIRCULAR SWIRL DIFFUSER, COLLAR AND INTERNALLY INSULATED CUSHION HEAD					675	500	250	No		
D6	CIRCULAR SWIRL DIFFUSER, COLLAR AND INTERNALLY INSULATED CUSHION HEAD					675	500	300	No		
DG1	DOOR GRILLE	450	150								
DG2	DOOR GRILLE	600	150								
DG3	DOOR GRILLE	600	200								
DG4	DOOR GRILLE	600	250								
DG5	DOOR GRILLE	600	350								
EG1	1/2 CHEVRON EXHAUST GRILLE (R/C), OBD & CUSHION HEAD	200	200	190	190			150	No	Yes	
EG2	1/2 CHEVRON EXHAUST GRILLE (R/C), OBD & CUSHION HEAD	250	250	240	240			200	No	Yes	
EG2a	1/2 CHEVRON EXHAUST GRILLE (R/C) & OBD	250	250	240	240				Yes		
EG3	1/2 CHEVRON EXHAUST GRILLE (R/C), OBD & CUSHION HEAD	300	300	290	290			250	No	Yes	
EX1	EXISTING DOUBLE DEFLECTION EXHAUST GRILLE & OBD	900	200	890	190				Yes		
EX2	EXISTING WESTERN POWER DISCHARGE LOUVRE	1100	300	1090	290				No		
L1	1/2 CHEVRON HEAVY DUTY LOUVRE, 40mm FLANGE	600	600	590	590				Yes		
L2	1/2 CHEVRON HEAVY DUTY LOUVRE, 40mm FLANGE AND INSULATED PLENUM	800	500	790	490				No	Yes	
L3	1/2 CHEVRON HEAVY DUTY LOUVRE, 40mm FLANGE, SPIGOT & OBD	800	900	790	890					Yes	
L4	2 SLOT LINEAR GRILLE FITTED WITH A MATT BLACK SIGHT BAFFLE			92	4990						
L5	2 SLOT LINEAR GRILLE FITTED WITH A MATT BLACK SIGHT BAFFLE			92	6490						
LP1	2 SLOT LINEAR DIFFUSER, (700L) DEFLECTOR BLADES AND INSULATED CUSHION HEAD			92	690			200	Yes		
LP2	3 SLOT LINEAR DIFFUSER, (1200L) DEFLECTOR BLADES AND INSULATED CUSHION HEAD			92	1190			250	Yes		
LP3	3 SLOT LINEAR DIFFUSER, (1300L) DEFLECTOR BLADES AND INSULATED CUSHION HEAD			92	1290			250	Yes		
LP4	3 SLOT LINEAR DIFFUSER, (1500L) DEFLECTOR BLADES AND INSULATED CUSHION HEAD			92	1490			250	Yes		
R1	1/2 CHEVRON RELIEF AIR GRILLE (R/C) AND INTERNALLY INSULATED CUSHION HEAD	250	250	240	240			200	No	No	
R2	1/2 CHEVRON RELIEF AIR GRILLE (R/C) AND INTERNALLY INSULATED CUSHION HEAD	450	450	445	445			300	No	No	
R2a	INTERNALLY INSULATED CUSHION HEAD FITTED TO SLATTED TIMBER CEILING	450	450	445	445			300	No	No	
R3	1/2 CHEVRON RETURN AIR GRILLE, FRAME (DROP IN TILE) AND ACOUSTIC PLENUM	560	560	550	550				No	No	
R4	1/2 CHEVRON RETURN AIR GRILLE (R/C), OBD & INSULATED CUSHION HEAD	600	600	590	590				Yes		
R5	1/2 CHEVRON RETURN AIR GRILLE (R/C), OBD & INSULATED CUSHION HEAD	1000	450	990	440				Yes		
S1	DOUBLE DEFLECTION SUPPLY AIR REGISTER AND OBD	600	200	590	190				Yes		
SP01	1/2 CHEVRON HEAVY DUTY LOUVRE, 40mm FLANGE	1500	800	1490	790				No	No	
WP01	WEATHER PROOF LOUVRE, FITTED WITH VERMIN MESH AND ACOUSTIC PLENUM	375	1000	365	990				No	No	
WP02	WEATHER PROOF LOUVRE, FITTED WITH VERMIN MESH AND ACOUSTIC PLENUM	600	600	590	590				No	No	
WP03	WEATHER PROOF LOUVRE, FITTED WITH VERMIN MESH	800	350	790	340				No	Yes	
WP04	WEATHER PROOF LOUVRE, FITTED WITH VERMIN MESH	1150	525	1140	515				No	No	



**A BASEMENT - SWITCHROOM PART PLAN**  
SCALE 1 : 50

1	ISSUED FOR TENDER	24.01.19	JMM
No.	Revision	Date	Issued
Client:			
		P (08) 9335 5492 F (08) 9335 5935 A Level 2, 25 Cantonment Street, Fremantle WA 6160	
Architect:			
		<b>Cox Architecture</b> 360 Murray Street, Perth, WA 6000, Australia T + 61 8 9322 3644 F + 61 8 9322 1664 www.coxarchitecture.com.au	
Engineer:			
		<b>Geoff Hesford Engineering</b> BE MIEAust Level 1, 45 Market Street, Fremantle, Western Australia, 6160 Mobile: +61 419 911 166 Email: geoffh@hesfordengineering.com.au	
Project:			
<b>125 MURRAY STREET</b> <b>125 MURRAY STREET, PERTH</b>			
Sheet Title:			
<b>MECHANICAL SERVICES</b> <b>BASEMENT LAYOUT</b>			
Drawn:	Date:	Job No.:	Drawing No.:
JMM	26.10.18	2019004	M01
Checked:	Scale:	Revision:	
GAH	As indicated@A1	1	